

Covington/Goodbee

Hwy 1077, Covington, LA, 70433

Land For Sale

Prepared on May 09, 2025

1 of 1 Listings



Listing Details | Land For Sale

Secondary Uses	Retail, Industrial	Available Date	3/14/2025
Total Available Space	30.72 Acres	Days On Market	56 days
Asking Price	\$11,374,387	Date Listed	3/14/2025
Listing Price Per SF	-	Last Modified	5/02/2025
List Price Per Acre	\$370,260	Listing ID	42125975
Cap Rate (Actual)	-	Parking Spaces	-
Terms	All Cash to Seller	Electric Service	-
Possession	Now	Water	-
Show Instructions	Call broker	Sanitary Sewer	-

Description

One of the last great development sites in St. Tammany Parish with I-12 exposure. 30.72 Acre parcel zoned for multiple uses, retail, office, multi family and industrial. All or part available. Located on Highway 1077 from I-12 to Highway 1085. With easy access to I-12, Highway 21, Highway 190 and Causeway Bridge. Listed at \$8.50 psf

Property Features

Location Details

Address	Hwy 1077, Covington, LA, 70433	Name	Hwy 1077
County	St. Tammany Parish	Cross Street	Highway 1085
Parcels	1030025178		

Building Details

Sub Type	-
Land Size	30.72 Acres / 1,338,163 SF
Electricity	-

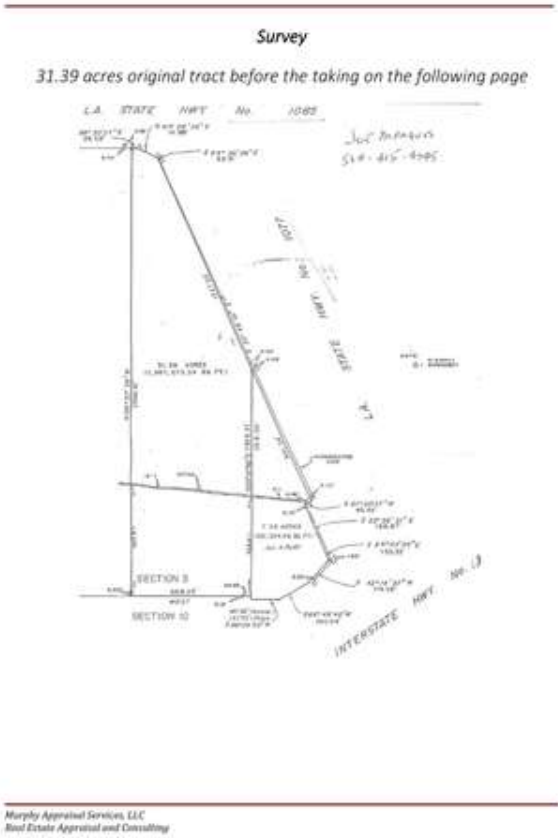
Water	-
Sanitary Sewer	-
Owner Occupied	Yes

Property Listings

1 Listing | 30.72 Acres | \$11,374,387

Type	Space Use	Suite	Available Space	Rate	Price Per Acre	Available
For Sale	Raw Land	-	30.72 Acre	\$11,374,387	\$370,259.99	3/14/2025

Additional Photos



Contact



Terrie Hughes

504-451-8234

terriehughes@bellsouth.net



KPG Realty, LLC